

Rebar Survey Marker

Models: FTD150, FTD200, FTD200BR, FTX200, PC6200, PC8200, RBD250, RBD325, RBD325BR, RBS325CHBR, RBX250, RBX325, RBX325BR

Recommended Installation Tools & Accessories:



Rebar driver



Steel stamp set



Lixie Deadblow Hammer
(LX7, LX10, LX11)



Work gloves, eye protection and proper clothing



Vise grip pliers
(2) Or Pipe Wrenches (two 6" wrenches)



Felt-tip permanent marker

Important: Prior to installation, stamp as much information on the marker as possible.

Caution: Before beginning any monument installation, contact your local ONE-CALL Utility Location Service to verify the safety of your chosen location.

Installation Process

Pre-installation

1. Cut your rebar to your desired length.
2. Remove any burrs and/or mushrooming on the end that will be receiving the cap.
3. For maximum grip, bevel the end of the rebar that will be receiving the cap.

Installing the rebar

1. With a felt-tip permanent marker, place a mark about 1 1/2" from the end of the rebar. This mark will be the guide to assure the cap is tightly and completely seated on the rebar.
2. Drive the rebar to the desired depth using a Berntsen rebar driver and urethane faced hammer.

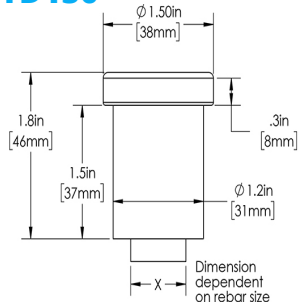
Installing the survey cap

1. To restrict sinking of the rebar into the ground, clamp a vice-grip pliers to the rebar at ground level. The handle of the pliers will prevent the rebar from sinking into the soil as you drive on your cap.
2. Tap Berntsen rebar cap onto rebar with a urethane faced hammer.
3. Remove the vice-grip pliers and drive the survey cap flush with the ground surface using a urethane faced hammer. Installation is now complete.

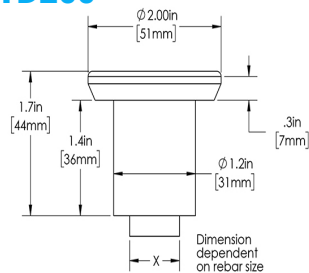
Rebar Survey Cap Marker

Types of Concrete Monuments

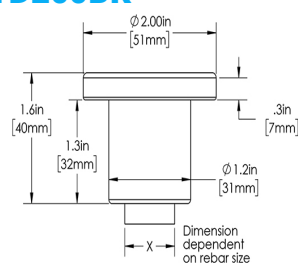
FTD150



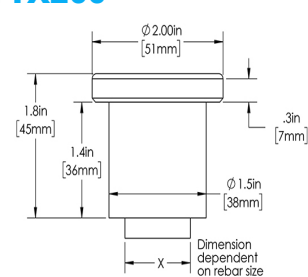
FTD200



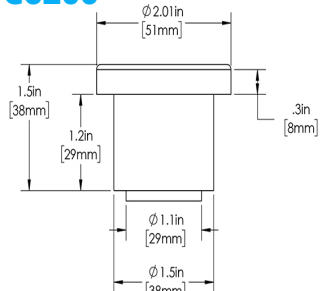
FTD200BR



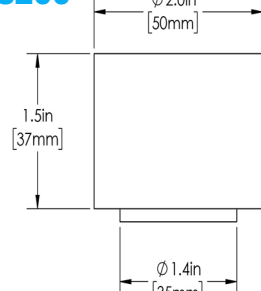
FTX200



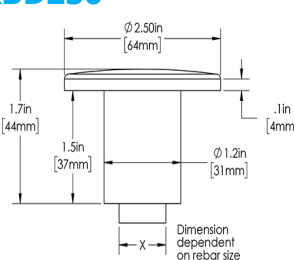
PC6200



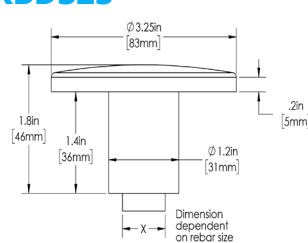
PC8200



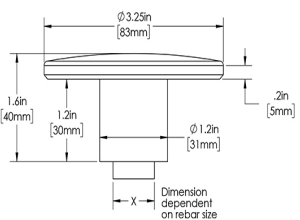
RBD250



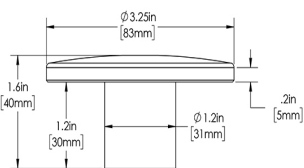
RBD325



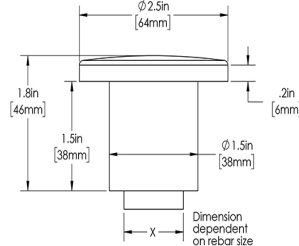
RBD325BR



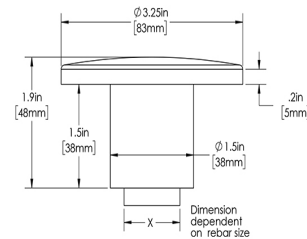
RBS325CHBR



RBX250



RBX325



RBX325BR

