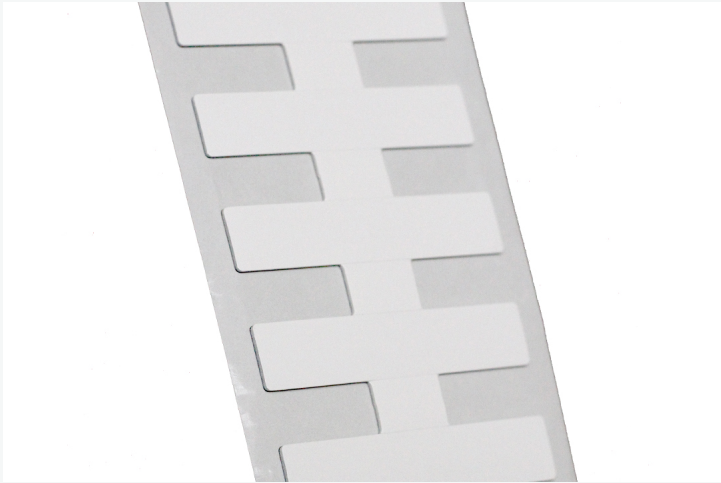


## [ Products ] you can identify with



### Physical Specifications

<b>Material</b>	White synthetic label
<b>Size</b>	55 x 12.5 x 1.2 mm, 2.17 x 0.49 x 0.05 in
<b>Weight (g)</b>	0.25
<b>Attachment</b>	Self-adhesive suitable for curved surfaces to a minimum radius of 58mm

Product dimensions shown above are the maximum. Batch to batch variation could be within 5%. Unspliced sections will be within 0.2mm tolerance.

### Dimensions



Measurements shown in mm

## IQ 150

The IQ 150 Ultrathin labels are designed for on metal tag functionality, within a small, low profile, easy to deploy label. Optimized for thermal barcode printers, the Omni-ID IQ 150 enables low cost and hassle-free RFID deployment. The Ultrathin labels redefine the standard for repeatability for on and off metal tagging applications demanding a very small low profile tag.

### RF Specifications

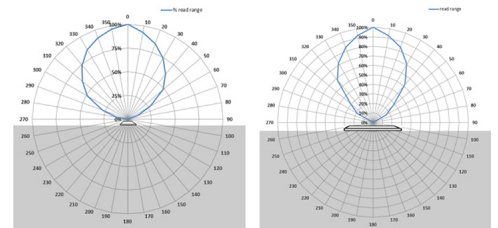
<b>Radio Protocol</b>	EPC Class 1 Gen2v2
<b>Frequency Range</b>	866 – 868 MHz (EU) 902 – 928 MHz (US)
<b>Read Range – Fixed Reader</b>	Up to 1.8m (5.9 feet)
<b>Read Range – Handheld Reader</b>	Up to 1m (3.3ft)
<b>Material Compatibility</b>	Metal, Plastic, Ceramic
<b>IC Type (Chip)</b>	Impinj-M730
<b>Memory</b>	EPC - 128 bits User - 0 bits Unique TID - 48 bits

Quoted performance achieved using standard testing methodology on Aluminium test plates. Read range is dependent on multiple factors such as; RFID reader transmit power and receiver sensitivity, asset material and environment. Please see the Omni-ID On Metal Labels User Guide for more detail.

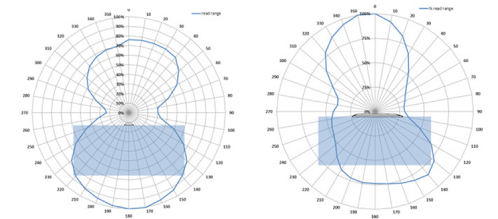
EPC is reprogrammable. UTID is locked at point of manufacture by IC manufacturer.

### Radiation Patterns

#### On Metal



#### Off Metal



## [ Products ] you can identify with



With innovative construction and excellent thermal barcode printer compatibility, the Omni-ID IQ 150 label is ideal for hassle free deployment of indoor asset management applications such as:

- IT, office, hospital and laboratory asset tracking
- Weapons, pipes, and road signs
- Warehouse management

### Certifications

CE, RoHS



### Environmental Specifications

<b>Operating Temperature</b>	-40°C to +85°C
<b>Max Temperature Exposure</b>	-40°C to +85°C
<b>Application Temperature</b>	+18°C to +35°C
<b>IP Rating</b>	IP68
<b>Printer Compatibility</b>	SATO, Zebra

### Ordering Information

<b>Warranty</b>	1 year	
<b>Part Number / Order Codes / Order Numbers</b>	CP16079-EU-No Ground Plane	
	CP16080-EU-With Ground Plane	
	CP16081-US-No Ground Plane	
	CP16082-US-With Ground Plane	
<b>Supply Format</b>	1000 labels per roll	
<b>Minimum Order Quantity</b>	Standard Label	1,000
	Service Bureau	1,000
	Customization	10,000
	Overlamination	10,000

For product or technology inquiries email: [sales@omni-id.com](mailto:sales@omni-id.com).  
Visit [omni-id.com](http://omni-id.com) to learn more about the complete line of **Omni-ID RFID** products